

# KANSAI University of International Studies

## GUIDE BOOK 2023

KANSAI UNIVERSITY OF INTERNATIONAL STUDIES GLOBAL SCHOOL OF INTERNATIONAL COMMUNICATION SAFETY SCHOOL OF SOCIOLOGY MANAGEMENT SCHOOL OF PSYCHOLOGY AMAGASAKI CAMPUS SCHOOL OF EDUCATION BUSINESS ADMINISTRATION SCHOOL OF BUSINESS ADMINISTRATION COMMUNITY STUDY SCHOOL OF HEALTH SCIENCES EDUCATION AND WELFARE FRESHMAN DEPARTMENT OF ENGLISH COMMUNICATION THREE POLICIES DEPARTMENT OF TOURISM GLOBAL COMMUNICATION DEPARTMENT OF SOCIOLOGY HISTORY DEPARTMENT OF PSYCHOLOGY INSTITUTIONAL RESEARCH DEPARTMENT OF CHILD EDUCATION AND SOCIAL WELFARE KOBAYAMATE CAMPUS DEPARTMENT OF BUSINESS ADMINISTRATION COMMUNICATION, COMMITMENT, CONSIDERATION DEPARTMENT OF NURSING LEARNING SUPPORT CENTER MAJOR IN INTERNATIONAL BUSINESS MIKI CAMPUS MAJOR IN SOCIOLOGY PLAN DO MAJOR IN CLINICAL PSYCHOLOGY MAJOR IN CHILD EDUCATION REFLECTION DAY MAJOR IN MANAGEMENT AND MARKETING SOCIOLOGY MAJOR IN NURSING MAJOR IN INTERNATIONAL CULTURE PSYCHOLOGY MAJOR IN DATA SCIENCE TOURISM MAJOR IN CLINICAL PSYCHOLOGY UNIVERSAL PASSPORT MAJOR IN SOCIAL WELFARE CHECK ACT MAJOR IN BUSINESS DESIGN MAJOR IN GLOBAL NURSING MAJOR IN TOURISM WARMING UP MAJOR IN DISASTER PSYCHOLOGY PLAN MAJOR IN COMMUNITY MANAGEMENT MAJOR IN HOTEL AND BRIDAL SERVICES PDCA GLOBAL STUDY MAJOR IN INDUSTRIAL AND CONSUMER PSYCHOLOGY MAJOR IN DISASTER PREVENTION AND CRISIS MANAGEMENT KUISs LEARNING BENCHMARK MAJOR IN AIRLINE SERVICES KUISs

# Message from the President

## Active learning for active people

### The university's founding principle of "I AI I EN"

Kansai University of International Studies (KUISs) is committed to education in accordance with its founding spirit, "I AI I EN" (以愛為園--create a circle of love). The Japanese character 愛 (love) refers to the idea of human connection, the bond of trust that develops when we show love and kindness toward one another. This concept of "valuing consideration among human beings and respecting others" is the starting point of education that can be applied to any age.

Our mission is to spread the spirit of "I AI I EN" throughout the world and to nurture human resources who can play an active role in the Asia-Pacific region in the future.

### The "3 C's" to be active in the world

Our mission statement "CCC" reflects the founding ethos and principles of our institution. The three Cs stand for Communication, Commitment, and Consideration. "Communication" is the art of dialog and the ability to articulate an idea or concept with clarity. Communication is most assuredly the foundation of a functioning society. "Commitment" refers to the idea of being an active participant in and contributor to specific organizations as well as to wider society. "Consideration" encompasses not just perception and deliberation of issues, but also the ability to display kindness and compassion toward others. The Consideration element of the CCC mission statement links directly to the I AI I EN principle.

Our goal is to produce well-rounded adults with the capacity for active communication, active consideration and active commitment.

### Unique educational opportunities at the three campuses

KUISs comprises six schools, seven departments and 18 majors distributed across three campuses at Kobeyamate, Amagasaki, and Miki with course offerings tailored to the unique characteristics of each campus. The Kobeyamate campus, located in a multicultural precinct with a distinctly international feel, offers mainly global communication, safety, and tourism courses and has a strong liberal arts component. The Amagasaki campus, located in a flourishing business and industry district, is closely linked to the nearby metropolis of Osaka. Amagasaki campus specializes in teacher training, management and marketing and business design courses. The Miki campus is located right next to Miki Disaster Memorial Park, which doubles as the local command center for disaster prevention and emergency response operations, as well as Kita-harima Medical Center, a state-of-the-art facility serving the local community. Accordingly, the Miki campus has a strong focus on health- and sport-related courses.

At those three uniquely different campuses, KUISs is fostering young people equip with the tools to survive and flourish in an age of uncertainty, in accordance with the CCC mission statement.

HAMANA Atsushi, Ph. D.  
President,  
Kansai University of International Studies  
Doctor of Sociology, Sophia University

---

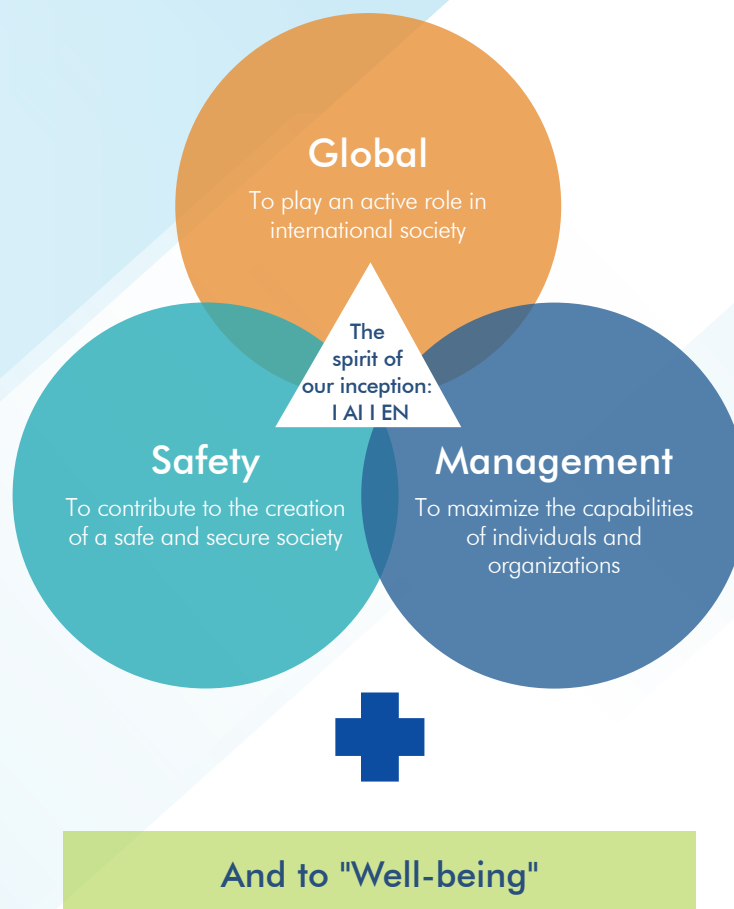
## Common Learning Themes for All Schools and Departments

---

From the perspectives of globalization, safety, and management, KUISs is developing the leaders of the next generation, with the power to thrive in global society.

Today's highly globalized world is filled with risks that we could not have predicted in the past. Not only are natural disasters and epidemics becoming increasingly severe, but corporate management, maintenance of social systems, and many other situations also require ideas and responses that are different from traditional approaches.

Accordingly, KUISs has developed an educational scheme based on the three pillars of "Global," "Safety," and "Management" as capabilities that all of our schools and departments must ensure. We are nurturing graduates who can construct and manage a safe and secure society while understanding diverse values.



KUISs will foster human resources who can realize and manage a wellness-oriented society through education based on these three perspectives.

## Schools/Departments at KUIs

<b>School of Global Communication</b> Department of Global Communication Department of Tourism	Major in Global Business	Kobeyamate Campus	
	Major in Multicultural Coexistence		
	Major in Tourism		
	Major in Hotel and Bridal Services		
	Major in Airline Services		
<b>School of Sociology</b> Department of Sociology	Major in Ethics of Multicultural Society	Kobeyamate Campus	
	Major in Culture and Media		
	Major in Data Science		
<b>School of Psychology</b> Department of Psychology	Major in Clinical Psychology	Amagasaki Campus	
	Major in Criminal Psychology		
	Major in Disaster Psychology		
	Major in Industrial and Consumer Psychology		
<b>School of Education</b> Department of Child Education and Social Welfare	Major in Child Education	Amagasaki Campus	
	Major in Social Welfare		
<b>School of Management</b> Department of Management	Major in Business Design	Miki Campus	
	Major in Community Management		
<b>School of Health Sciences</b> Department of Nursing	Major in Nursing	Miki Campus	
	Major in Global Nursing		

## Data about KUIs

Data As of May 1, 2022

Number of Students 2,923\*  
(Male 1,583\* / Female 1,340\*)

Number of Staff 249  
Teaching Staff 144\*\*

Number of International Students 326\*

Non-Teaching Staff 105

\*including undergraduate students, graduate students, Japanese Language Course students, auditors

\*\*not including part-time professors or lecturers

## Distinctive features of KUIsS

In order to acquire the necessary skills to cope with unpredictable times, KUIsS has a unique "learning mechanism" that allows students to create a plan in accordance with their future goals, and to create an academic plan while reflecting on and improving their learning.

### Indices to guide learning progress: the KUIsS Learning Benchmarks

KUIsS provides a well-rounded education with a particular focus on skills and competencies in six key areas. The KUIsS Learning Benchmarks are the yardstick for measuring student progress and achievement in these areas.



Autonomous and proactive attitude (Autonomy)



Active contribution to society (Social Contribution)



Ability to understand and accept different cultures and backgrounds (Understanding Diversity)



Problem discovery and solving ability



Communication skills

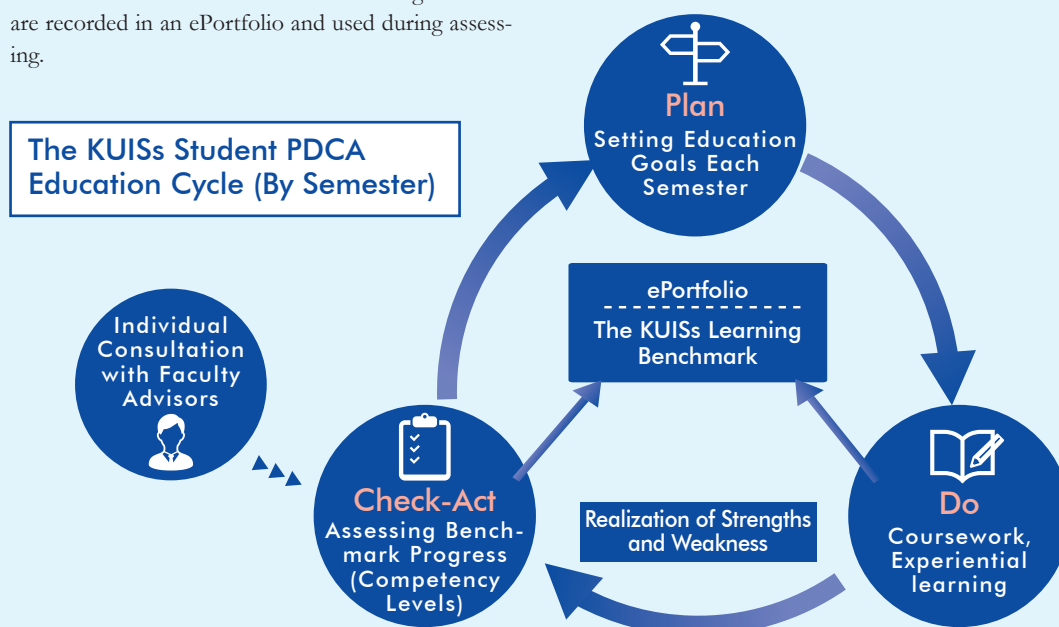


Use of specialist knowledge and skills

### Basic cycle for achieving goals

Each student sets goals and activities based on the KUIsS Learning Benchmarks. These will help measure how well they have achieved them at the end of each semester. Their experiences and learning outcomes from the time of enrollment to graduation are recorded in an ePortfolio and used during assessing.

Furthermore, based on the results of their reflections, they will acquire the skills needed in society while making creative improvements in their studies and daily lives.



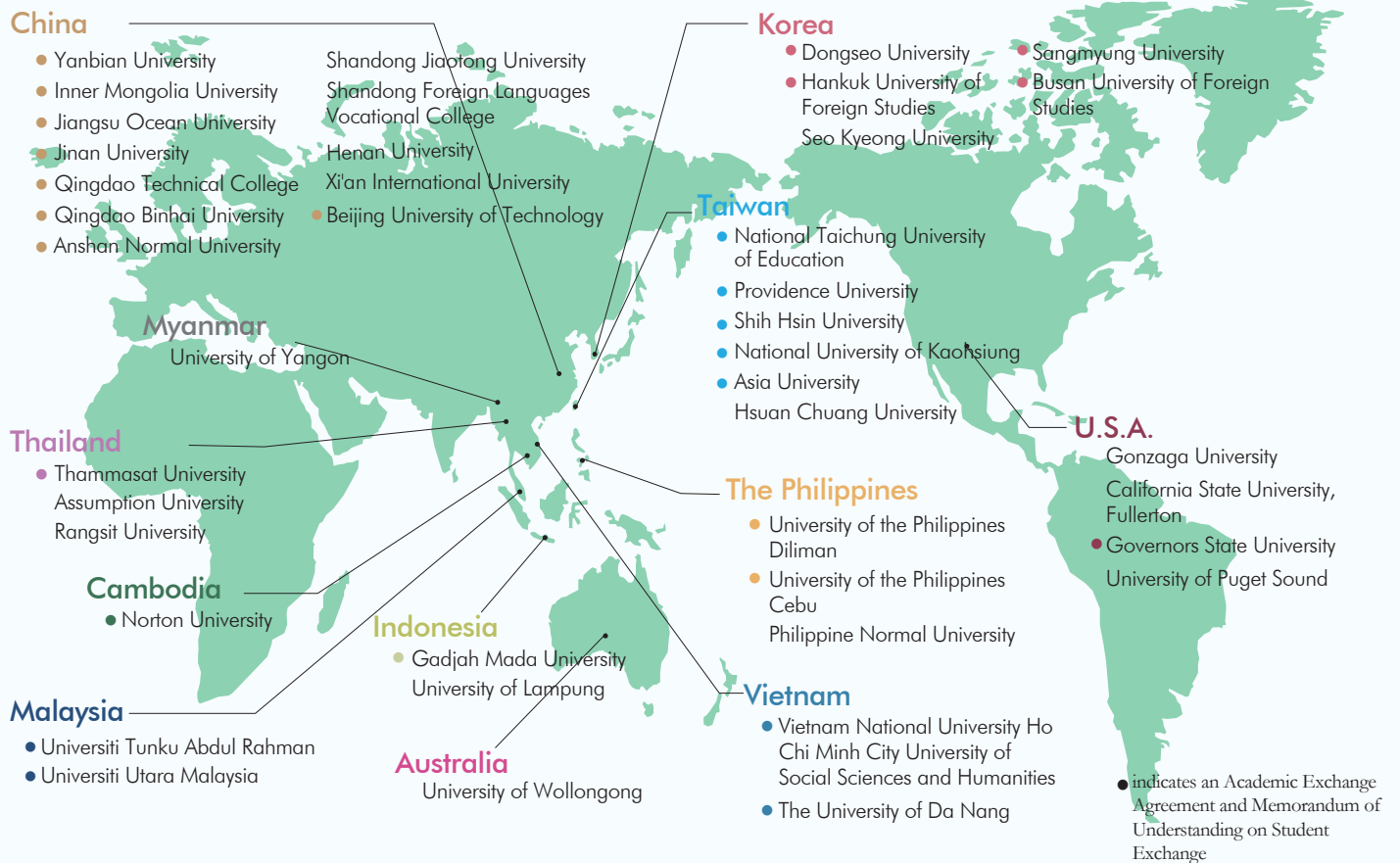
# International Collaboration

## 68 partner universities in the Asia-Pacific region

The number of universities with which KUISs signed international agreements is growing year by year. We now have 68 partner universities, primarily in the Asia-Pacific region, which Japan will be closely involved with into the future.

### Major Partner Universities

Data As of May 1, 2022



## History of KUISs

1950

Established Ainosono Kindergarten under the spirit of "IAI - IEN"  
(以愛為園, create a circle of love)

1987

Established Kansai Women's Junior College (Department of Management)

1998

Established Kansai University of International Studies (School of Management)

2001

Established School of Human Studies

2005

Established Graduate School of Kansai University of International Studies (Graduate School of Behavior Sciences)

2007

Reorganized School of Management and School of Human Studies into School of Human Sciences and School of Education

2009

Opened Amagasaki campus

2013

Established School of Health Sciences

2014

Established Kansai University of International Studies Bekka (Japanese Language Course)

2015

Established Graduate School of Nursing Science

2020

Hamana Gakuin Educational Corporation amalgamated with Kobe Yamate Gakuen Educational Corporation to form Hamana Yamate Gakuin Educational Corporation.

# Asian Cooperative Program (ACP)

## Promote safety and security together with students from Asia

The ACP Consortium was launched in 2014, when we invited universities in Southeast Asia to join. It is a region that faces the threat of natural disasters that are similar to those in Japan, such as earthquakes, tsunamis, and volcanic eruptions. The consortium is engaged in a wide variety of activities, including the joint development of educational programs on disaster prevention and recovery.



The 10th ACP Online Conference held on March 1st, 2022

### Details of the Initiative

- 1** Jointly develop safety and security education
- 2** Offer an ACP joint certificate
- 3** Hold ACP International Field Study programs

### 15 Universities of ACP Consortium



#### Malaysia

- 1 Universiti Utara Malaysia
- 2 International Islamic University Malaysia
- 3 Universiti Tunku Abdul Rahman
- 4 Management and Science University

#### Indonesia

- 5 University of Lampung
- 6 Institute of Teknologi Bandung
- 7 Gadjah Mada University
- 8 Universitas Atma Jaya Yogyakarta
- 9 Brawijaya University

#### Myanmar

- 10 University of Yangon

#### Thailand

- 11 Thammasat University

#### Vietnam

- 12 The University of Danang
- 13 Vietnam National University Ho Chi Minh City University of Social Sciences and Humanities

#### The Philippines

- 14 University of the Philippines Cebu
- 15 University of the Philippines Diliman

## Safety Management Education at KUIs

Nurturing skilled experts who are ready and prepared to respond to a range of natural disasters and emergencies in a wide range of settings and situations

In these times of great uncertainty, KUIs is dedicated to equipping students with the management skills and competencies to drive public safety and security in society—truly a shared universal objective the world over. In light of the alarming incidence of natural disasters in

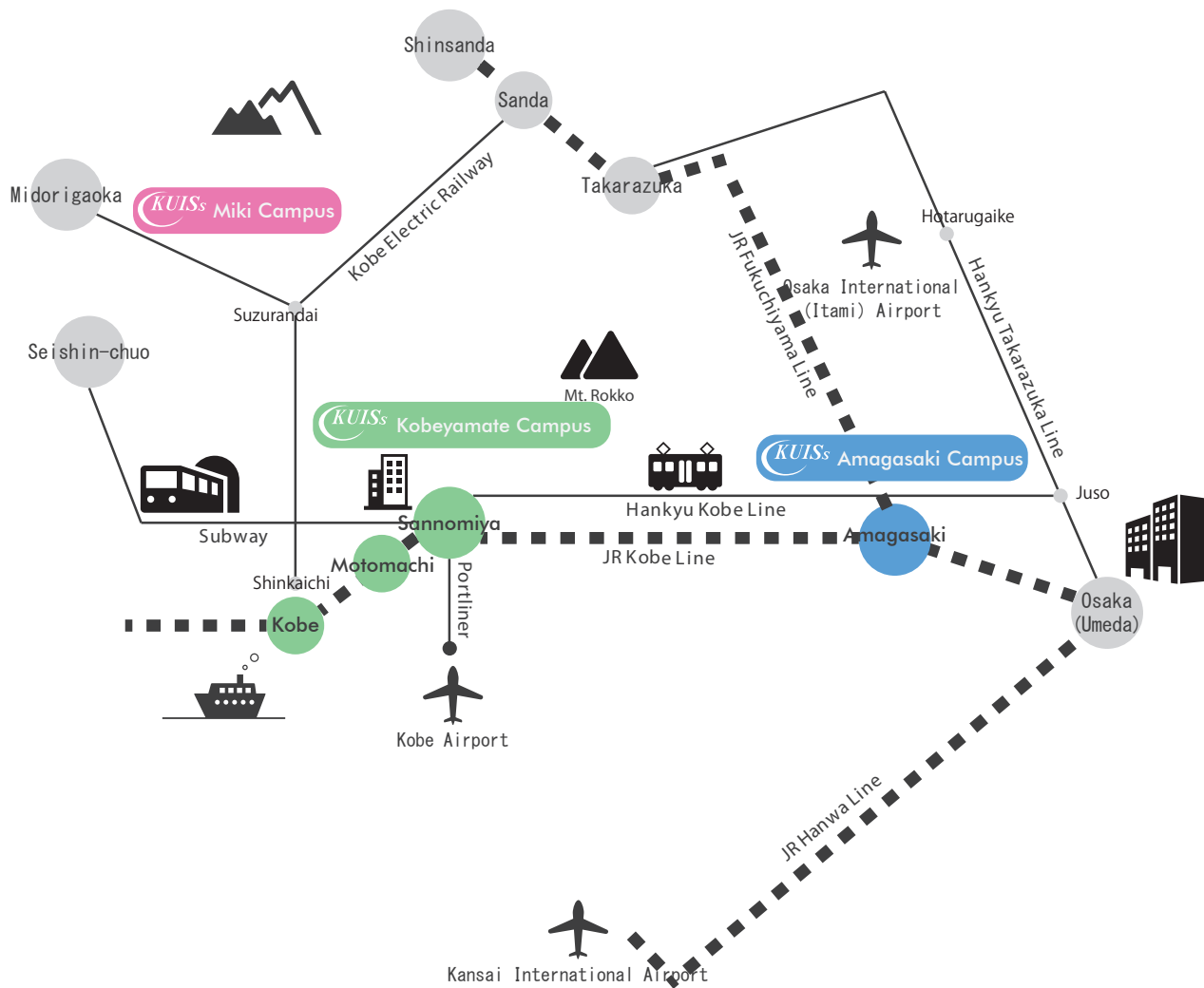
Japan and around the world, we mandate safety management subjects in all schools and departments to ensure that students receive a basic grounding in disaster prevention techniques and emergency response procedures.

Bousaisi (Disaster Management Instructor) accreditation course offered to all students. Acquisition of basic safety management skills.

KUIs collaborates with local governments, specialized institutions, and 15 Asian universities. We are sharing and developing specialized knowledge and skills on a global scale.

KUIs fosters the crisis management skills that all organizations need. Our goal is to nurture graduates who are capable of responding to change.





### Kobeyamate Campus

3-1 Suwayamacho, Chuo-ku, Kobe,  
Hyogo 650-0006  
TEL: +81-78-341-6060

Access: 13min. from Motomachi Station on foot



### Amagasaki Campus

1-3-23 Shioe Amagasaki,  
Hyogo 661-0976  
TEL: +81-6-6498-4755

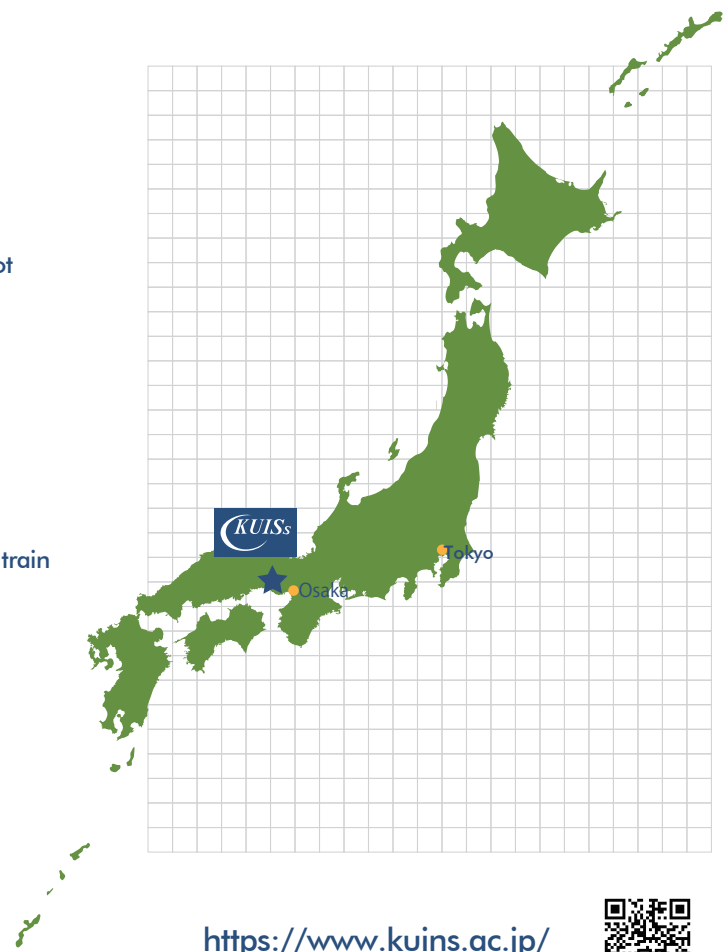
Access: 5 min. from Osaka Station,  
15 min. from Sannomiya Station by JR train



### Miki Campus

1-18 Aoyama Shijimicho Miki,  
Hyogo 673-0521  
TEL: +81-794-85-2288

Access: 35 min. from Sannomiya Station  
by KUISs School bus



<https://www.kuins.ac.jp/>

